

# Format and Lock Utility User Manual (v2.0)

## USB 2.0 Flash Disk

---

### 1. Introduction

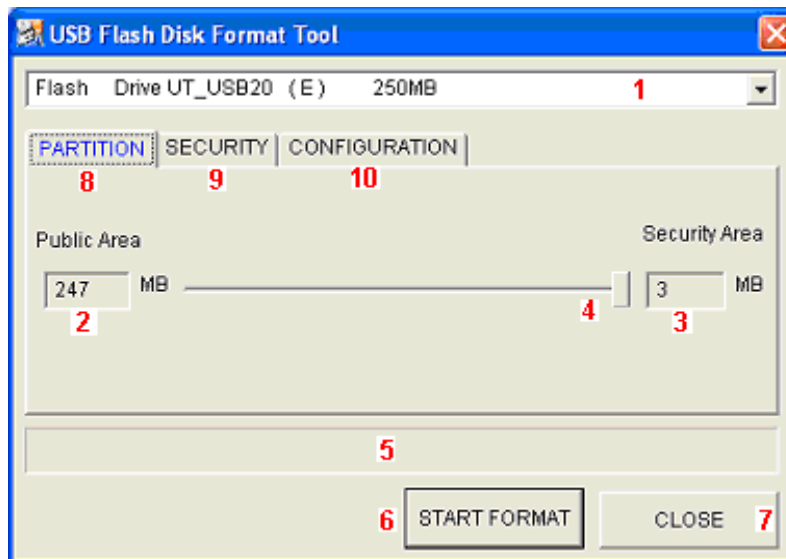
This FORMAT tool contains two programs: Format.exe and Lock.exe. The former (Format.exe) is used to format/partition the USB flash disk and the latter (Lock.exe) is for security disk function.



### 2. Format.exe Interface

Click on the Format.exe icon to activate the USB Flash Disk Format Tool window.

#### 2.1 PARTITION



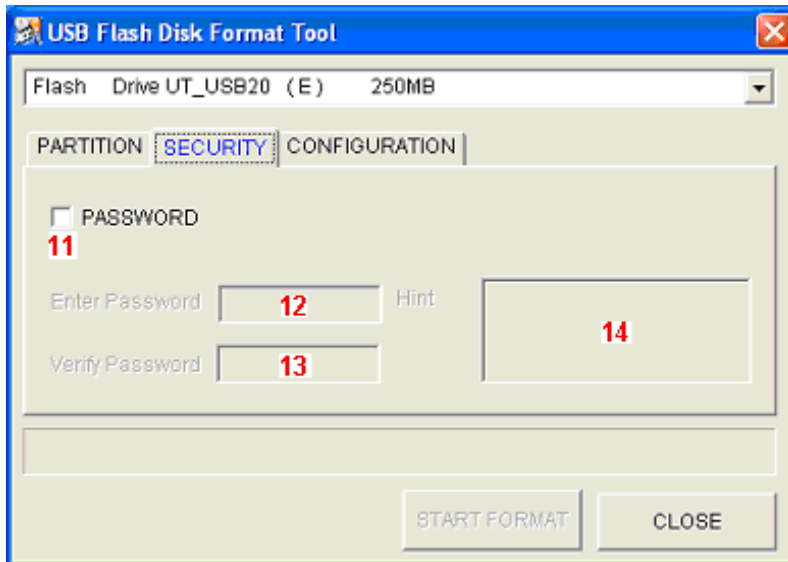
- 1. Flash Disk Profile:**  
Shows Vendor Name, Product Name, assigned Drive letter, and Disk capacity.
- 2. Public Area:**  
Shows the disk capacity of public area. The minimum capacity of this area is 3MB.
- 3. Security Area:**  
Shows the disk capacity of security area. The minimum capacity of this area is 3MB.
- 4. Capacity Scroll Bar:**  
Scroll Bar to adjust the capacity of public and security areas. Valid for adjustment after SECURITY function is enabled.
- 5. Format Progress Status Bar:**  
Shows the progress of disk formatting.
- 6. START FORMAT:**  
Click Button to start disk formatting.
- 7. CLOSE:**  
Click Button to exit from Format Tool.
- 8. PARTITION:**  
Click Button to select PARTITION function.
- 9. SECURITY:**  
Click Button to select SECURITY function.
- 10. CONFIGURATION:**  
Click Button to select CONFIGURATION function.

# Format and Lock Utility User Manual (v2.0)

## USB 2.0 Flash Disk

---

### 2.2 SECURITY



#### 11. PASSWORD

After checking this item, the entry spaces 12, 13 and 14 will be valid for edit, and the scroll bar in PARTITION window is allowed to change after passwords are filled.

(Note: This item must be checked before flash disk can be formatted with security area).

#### 12. Enter Password:

Entry space to define password, minimum 1 character, maximum 4 characters.

#### 13. Verify Password:

Entry space to double confirm the password entered.

#### 14. Hint:

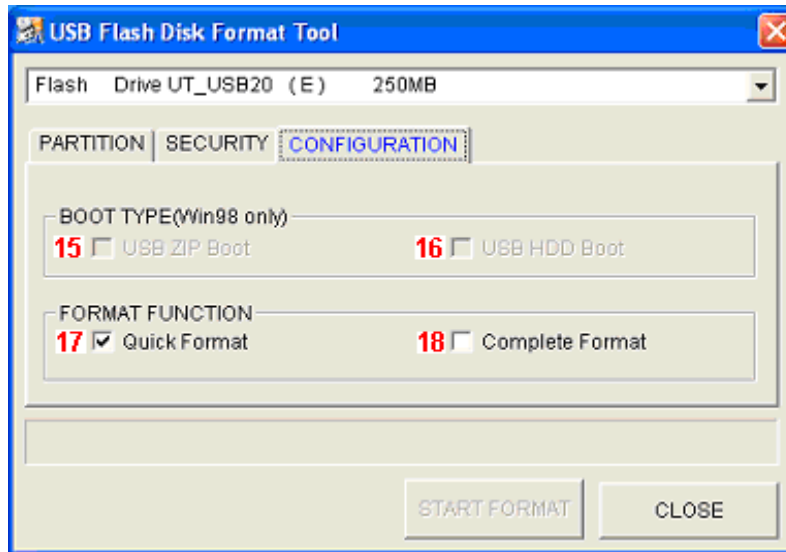
Entry space to define the hint of password (optional).

# Format and Lock Utility User Manual (v2.0)

## USB 2.0 Flash Disk

---

### 2.3 CONFIGURATION



**15. USB ZIP Boot:**

Supported for Windows 98SE only. After the formatting is done, the USB flash disk will be shown as Removable Disk in the system.

**16. USB HDD Boot:**

Supported for Windows 98SE only. After the formatting is done, the USB flash disk will be shown as Fixed Disk in the system.

**17. Quick Format:**

Selects Quick Format will clear the internal file table only, which is referenced by operation systems.

**18. Complete Format:**

Selects Complete Format will format the flash into a public area. All existing data will be erased.

**Note:**

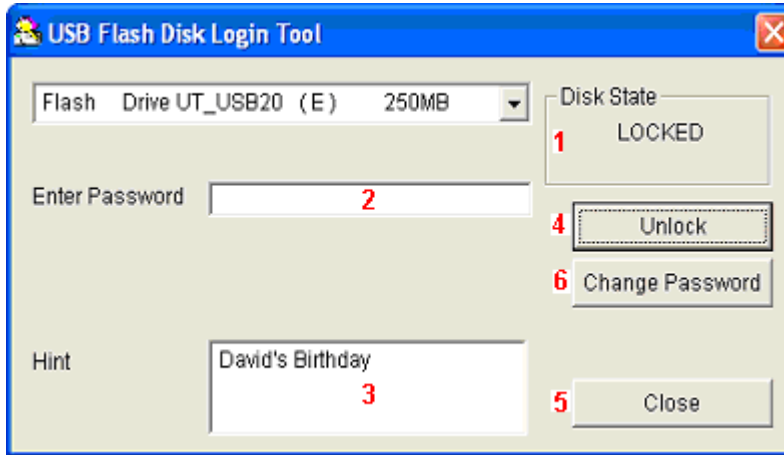
- A. After formatting, must un-plug then re-plug the flash disk for proper functioning.
- B. If security function is selected, after formatting, the login program (LOCK.EXE) will be loaded into the flash disk public area for user to access the security area at other PCs.
- C. USB Bootable:
  - For Windows 98SE only.
  - Make sure the directory: \COMMAND\EBD exist in operation system, otherwise, it is required to create the directory, then copy and save boot files into it before formatting the flash disk.
  - BIOS must support boot device from USB. Before system boot up, set the USB boot device at the highest priority. If USB boot fails, check whether the boot files exist.

# Format and Lock Utility User Manual (v2.0)

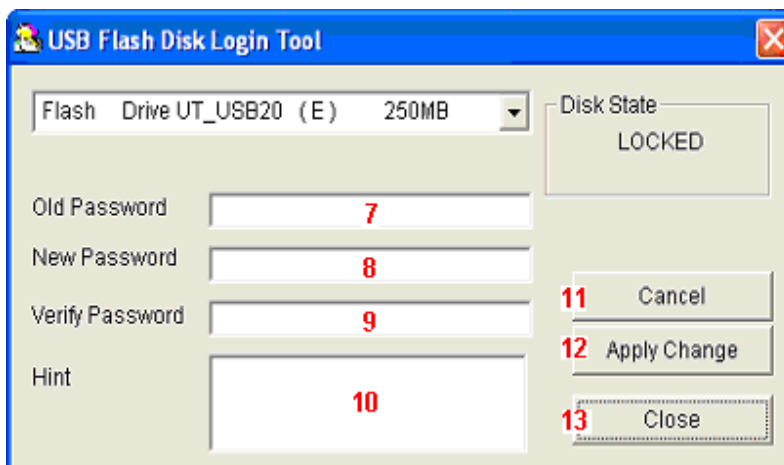
## USB 2.0 Flash Disk

### 3. Lock.exe Interface

Click on the Lock.exe icon to activate the USB Flash Disk Login Tool window.



- 1. Disk State:**  
Indicates the access state of USB flash disk. When the Disk State is LOCKED, the Public Area is being accessed. When the Disk State is UNLOCKED, the Security Area is being accessed.
- 2. Enter Password:**  
Entry space for password to unlock the flash disk.
- 3. Hint:**  
Shows hint for password.
- 4. Unlock:**  
Click Button to unlock and access the security area. Enter password before clicking this button.
- 5. Close:**  
Click Button to exit Login Tool.
- 6. Change Password:**  
Click Button to access the window for changing password as shown below.



- 7. Old Password:**  
Entry space for old or current password.
- 8. New Password:**  
Entry space for new password (minimum 1 character, maximum 4 characters).

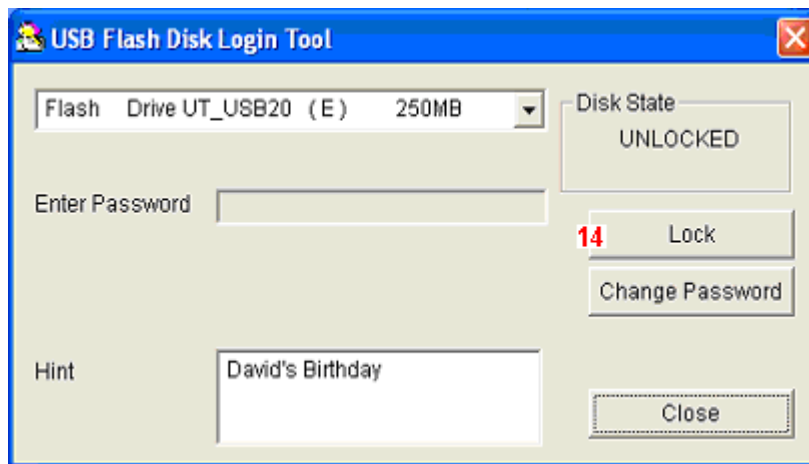
## Format and Lock Utility User Manual (v2.0)

### USB 2.0 Flash Disk

---

- 9. Verify Password:**  
Entry space to double confirm new password entered.
- 10. Hint:**  
Entry space to define the hint for new password.
- 11. Cancel:**  
Click Button to cancel the password change.
- 12. Apply Change:**  
Click Button to perform changing password.
- 13. Close:**  
Click Button to exit Logic Tool.

When the flash disk is in the UNLOCKED state, double clicks on Lock.exe icon in Windows' Menu Bar will bring up the Login Tool window as shown to return to LOCKED state.



- 14. Lock:**  
Click Button to return the flash disk to LOCKED state.